

# **The Role of Law Enforcement with Older Drivers**

**MGS Conference 2007**

**Bob O'Brien, LEL  
sasmetro@msn.com**



# Law Enforcement Mission

- Serve as a source for helpful aging driver information
- Identify and refer at-risk drivers to licensing agency
- Document traffic stops



# Is it our responsibility?

- **Have you dealt with a family member who was an unsafe driver?**
- **Given an elderly driver a break when your better judgment told you not to?**
- **Know you can absolutely tell the difference between impairment by alcohol, drugs or a medical condition?**
- **Do you know what to do and what resources there are for Law Enforcement when dealing with elderly drivers?**
- **Does your community have resources that are advertised?**
- **Is there a problem? Do you ever worry about your own health and safety as a driver?**



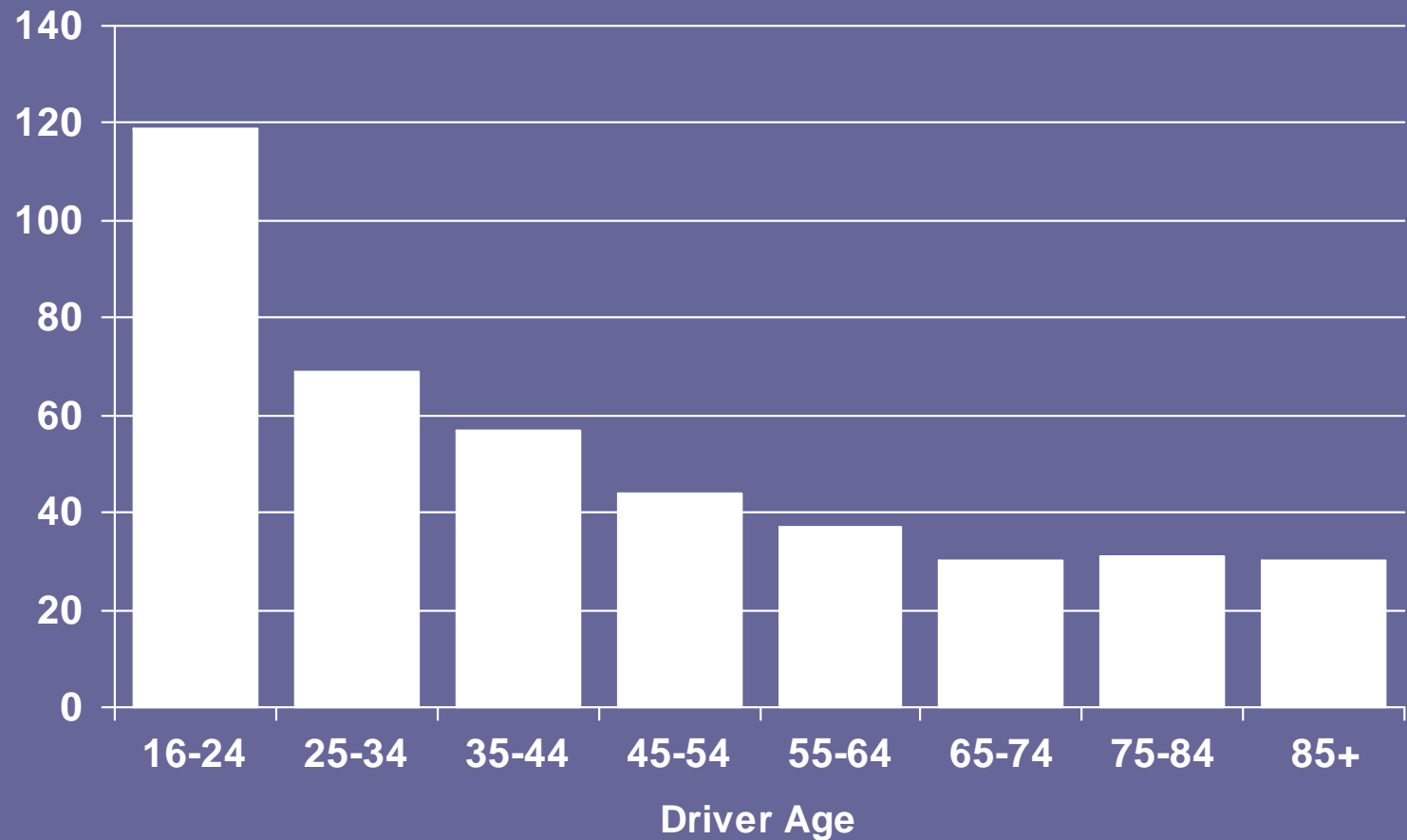
# Why Law Enforcement?

- Can we get ahead of the curve or is it too late?
- Is it acceptable to do nothing?
- What can we do and who is involved?
- How do we?
- Is it a law enforcement or a community program?



# Crashes per Licensed Driver

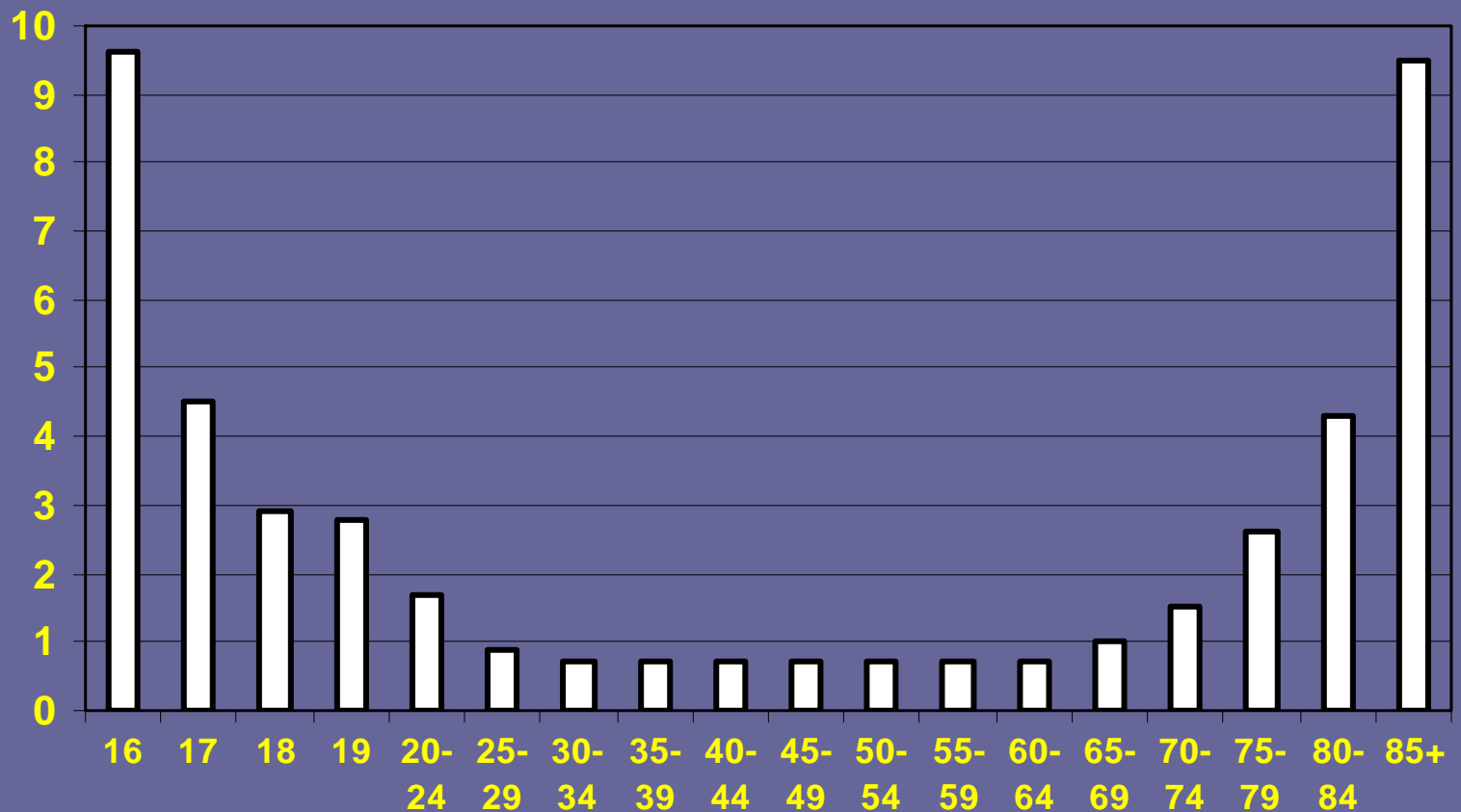
Crashes per 100,000 drivers



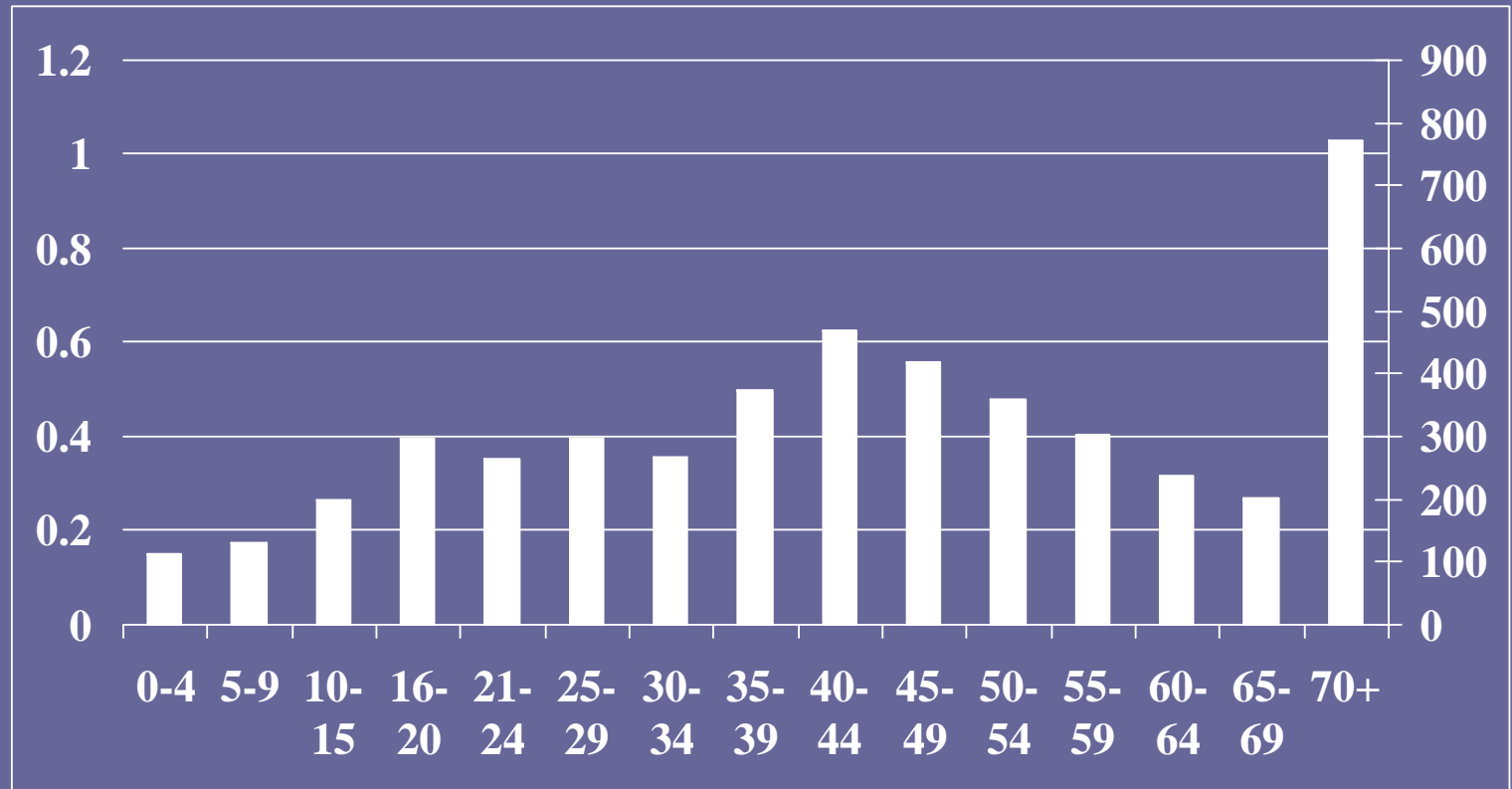
(Source NCSA, 2000)



# Driver Fatality Rate (per 100 million VMT)



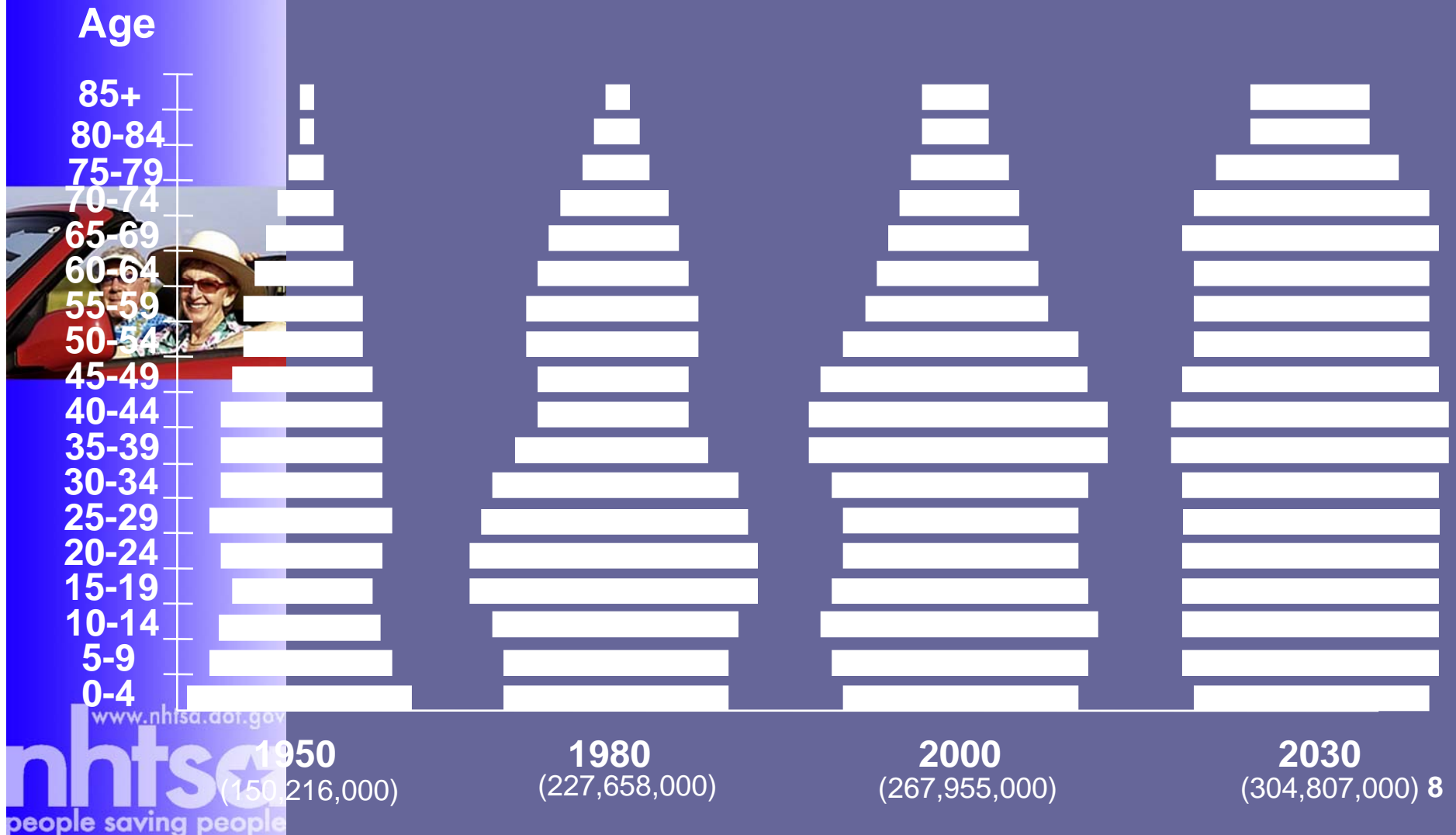
# Pedestrian Fatalities Rate per Population by Age 2003



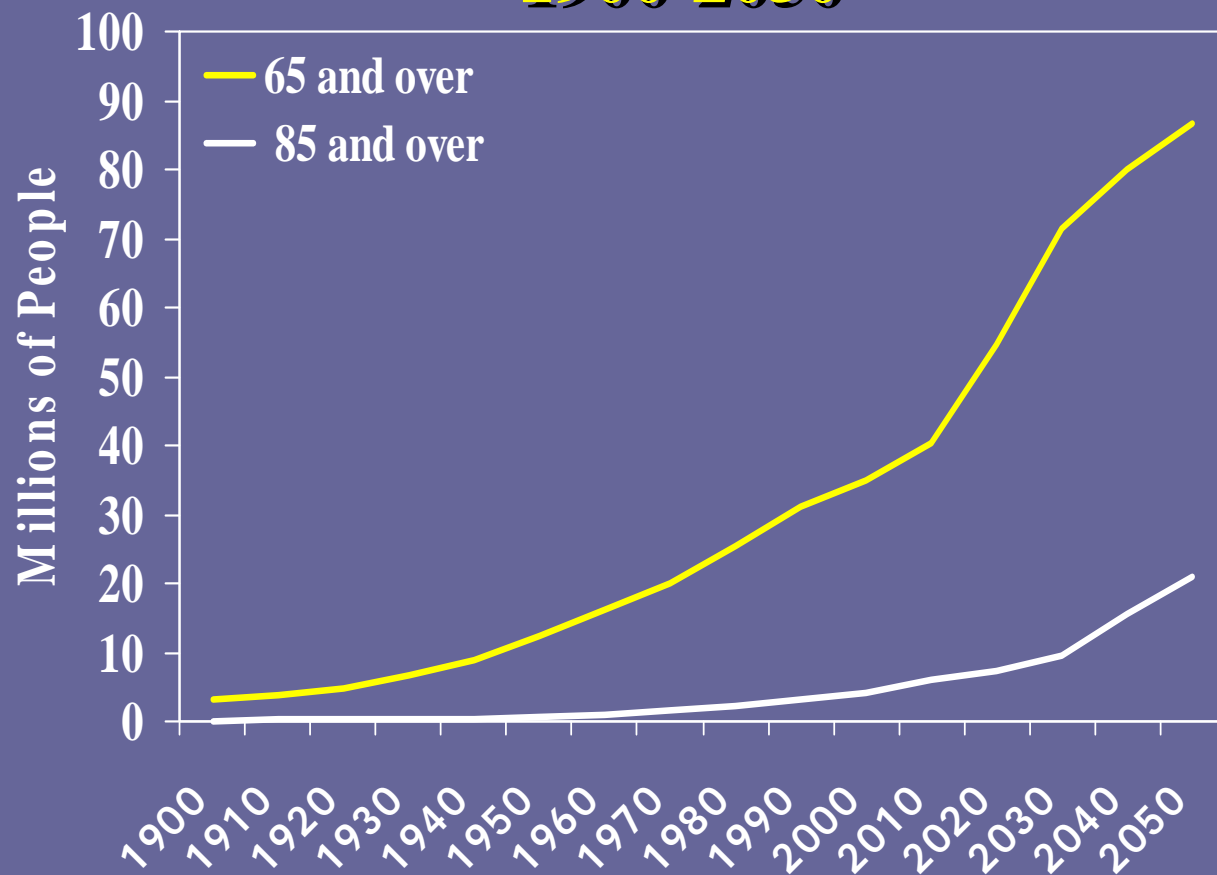
Source NCSA, 2004

# US Population By Segment

## (Squaring the U.S. Population Pyramid 1950-2030)



# Number Of People Age 65 and Over and 85 And Over 1900-2050



# The Program

- **Module 1**  
Reasons to Care!
- **Module 2**  
Understanding Aging Factors.
- **Module 3**  
Conducting the Traffic Stop.
- **Module 4**  
Making Referrals
- **Module 5**  
Older Driver Community Relations Programs



# Case Studies

- AOTA,
- American Occupational Therapy Association, Inc.
- [www.aota.org](http://www.aota.org)



# Resources

- **NHTSA, National Highway Traffic Safety Administration.**  
[www.nhtsa.gov](http://www.nhtsa.gov)
- **AOTA, American Occupational Therapy Association, Inc.**  
[www.aota.org](http://www.aota.org)
- **Alzheimer's Association (Safe Return)**  
[www.alz.org](http://www.alz.org)
- **AAA, America Automobile Association, Roadwise Review**  
[www.aaa.com](http://www.aaa.com)
- **Minnesota Department of Public Safety, Office of Traffic Safety.**  
[www.dps.state.mn.us/ots](http://www.dps.state.mn.us/ots)
- **National Road Safety Foundation, Inc.**  
[www.nationalroadsafety.org](http://www.nationalroadsafety.org)
- **Minnesota Safety Council**  
[www.mnsafetycouncil.org](http://www.mnsafetycouncil.org)
- **AARP, [www.aarp.org](http://www.aarp.org)**
- **MN Department of Motor Vehicles**  
[www.dvs.state.mn.us](http://www.dvs.state.mn.us)
- **Bob O'Brien, LEL**  
[sasmetro@msn.com](mailto:sasmetro@msn.com)

