



LifeCourse:

A clinical trial of early palliative care, delivered in the community by trained lay persons

Eric W. Anderson, MD
Division of Applied Research



Objectives

- Describe two tools for understanding individuals as whole persons.
- Understand the relationship between whole person care and advance care planning.

2



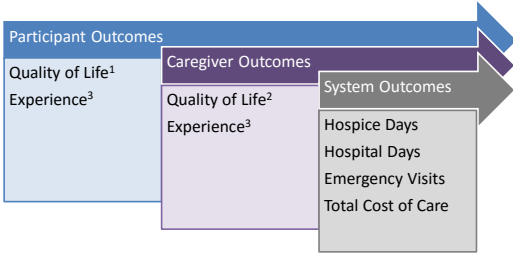
Serious Illness Care Today



3



Outcomes



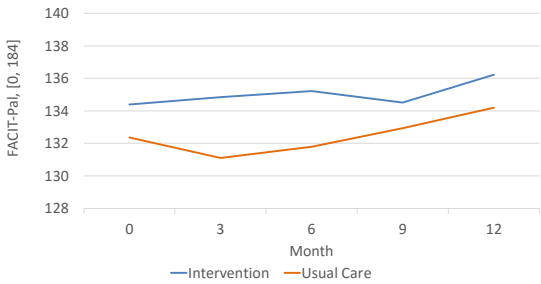
- 1. FACIT-PAL (Functional Assessment of Chronic Illness Therapy - Palliative Care)
- 2. PROMIS-29 (Patient Reported Outcome Measurement Information System)
- 3. LifeCourse Experience tool

4





FACIT-Pal Total Trajectory

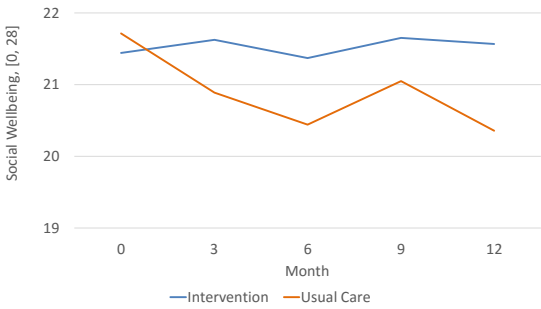


6

Note: Adjusted using primary diagnosis standardization.



Domain Trajectory: Social

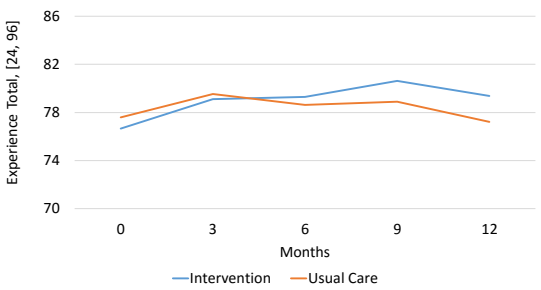


7 Note: Adjusted using primary diagnosis standardization.





Experience Total Trajectory

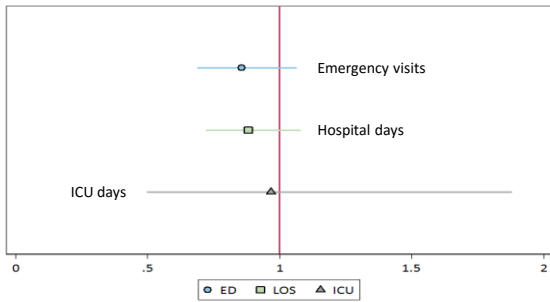


9 Note: Adjusted using primary diagnosis standardization.





Utilization



11



Palliative Care

Visit Type	Intervention (N=429)				Usual Care (N=262)				P-Value	
	#	Mean ± SD	Min	Max	#	Mean ± SD	Min	Max		
Inpatient Palliative Care Visits										
MD/NP	93	6.4 ± 10.7	1	81	50	3.9 ± 2.7	1	14	0.037	
Social Work	28	2.8 ± 7.0	1	38	8	1.6 ± 0.9	1	3	0.384	
Spiritual	18	2.6 ± 2.0	1	9	20	2.0 ± 3.0	1	14	0.501	
Community-Based Palliative Care Visits										
Total	8	7.4 ± 3.5	3	13	11	4.3 ± 3.2	1	10	0.063	

12



Hospice Utilization Prior to Death

	U.S. (N=2.6M)	Allina (N=46,198)	Intervention (N=129)	Usual Care (N=52)	P-Value
Enrollment, %	42.8	17.4	53.5	40.4	0.111
LOS, median days	18.7	17.0	27.0	14.0	0.094

All data are percent unless otherwise indicated. NHPCO estimates are for the 2013 calendar year. Allina EHR estimates are for patients with any hospice admission and a date of death in 2013 or later.

13



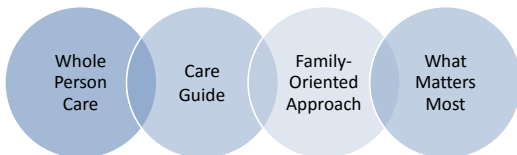
Research Outcomes

Measure	Early Results	
	Participant	Caregiver
PATIENT & FAMILY OUTCOMES		
Quality of Life	+	+/-
Experience	+	+
SYSTEM OUTCOMES		
Palliative Care Utilization		↑
ED Visits		↓
Inpatient Days		↓
Advance Directives		↑
Hospice Enrollment		↑

14



Key Components



15



Expanded Palliative Care Domains

NCP Palliative Care domain name	LifeCourse domain name
Structure and processes of care	Not included as a domain
Physical aspects of care	Physical domain
Psychological and psychiatric aspects of care	Psychological domain
Social aspects of care	Social domain
	Family/Caregiver domain
Cultural aspects of care	Cultural domain
Spiritual, religious, and existential aspects of care	Spiritual domain
	Legacy/bereavement domain
Care at the end of life	End of life domain
Ethical and legal aspects of care	Ethical domain
	Financial/legal domain

16



Care Guide Training

- Palliative care: domains, goals, and what matters most
- Relational training to build communication techniques, develop healing presence, and ensure an understanding of professional boundaries
- LifeCourse semi-structured visit framework and field guides
- Skills validation

17



Semi-Structured Visit Framework

	Visit #1	Visit #2	Visit #3	Visit #4	Visit #5	Visit #6	On-going
	Set Intention						
	What Matters Most/Goals						
Question Sets	Physical	Social	Cultural	Financial & Legal	Revisit Question Sets	Revisit Question Sets	Revisit Question Sets
	Psychological	Cultural		Spiritual			
	Family			Legacy			
Assessment Tools	Physical	Physical	Spiritual	Revisit Physical	Revisit Physical	Care at End of Life	Revisit Assessment Tools
				Ethical			
	Further Exploration and Validation						
	Follow-up Plan and Next Steps						
	Supplemental Visit: Advance Care Planning						

18



Goals: Medical, Non medical, Multiple, WMM

"I want to breathe without oxygen"

"I want to improve my memory"

"I'd like to do some volunteer work"

"I want to go shopping."

"I want to talk to my pastor about what this dementia is like"

"I want to create a will"

"I JUST WANT HER TO BE HAPPY."



19

Ethical Domain



Topic 1: Recognize and validate goals and preferences based upon current state of health
Topic 2: Recognize when decision-making capacity is impaired or possibly impaired



Advance Care Planning
Mini-Cog™



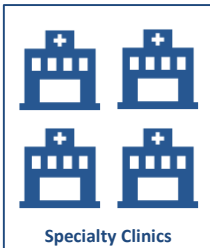
Patient goals conflict with medical plan of care
Scoring of Mini-Cog™

Connect with patient's provider team



20

LifeCourse Spread – 2016



21

Serious Illness Care... from Today Forward



22



Thank You!

Questions?
Eric Anderson
Eric.worden.Anderson@allina.com
www.lifecoursemn.org
