

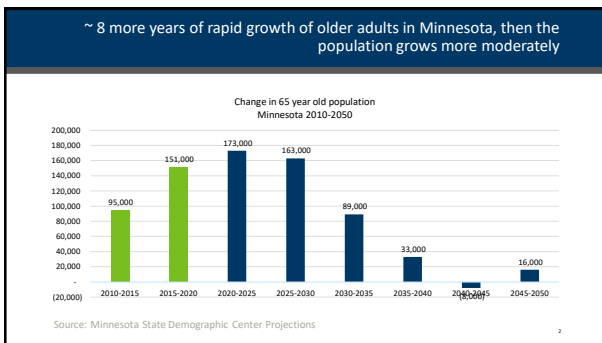


**MINNESOTA STATE
DEMOGRAPHIC CENTER**
DEPARTMENT OF ADMINISTRATION

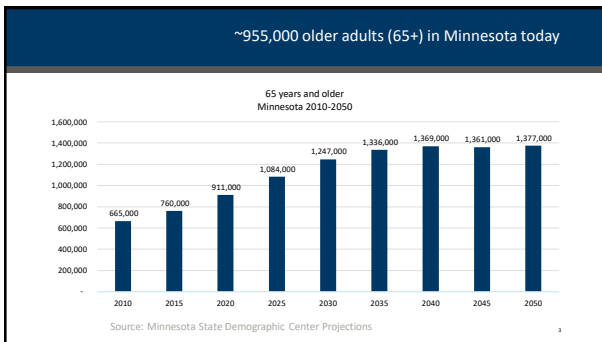
Older adults in Minnesota: Where are we now?

Susan Brower, PhD, Minnesota State Demographer
March 20, 2022

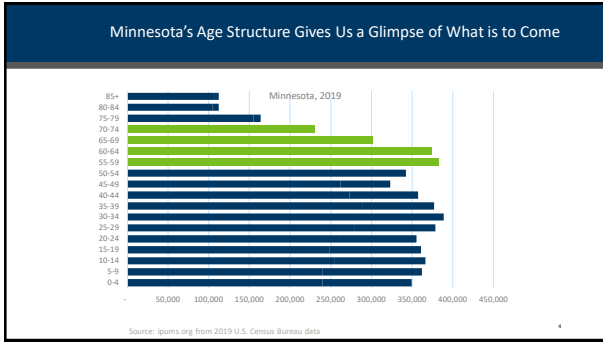
1



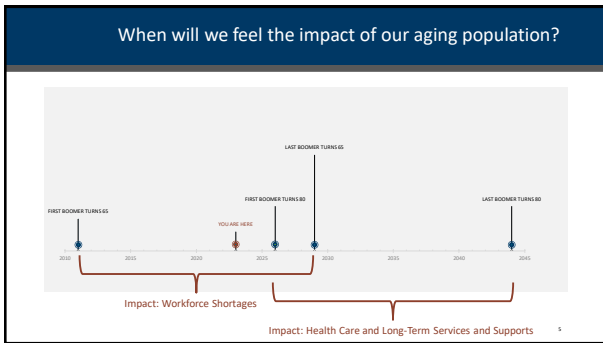
2



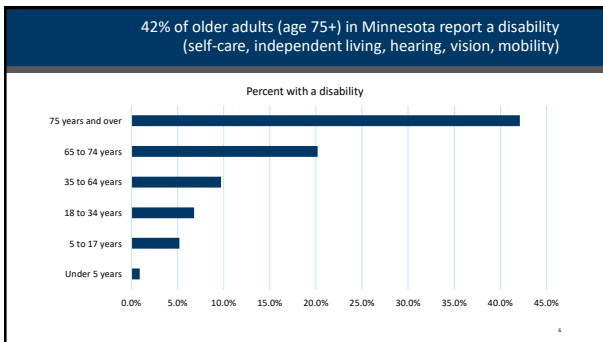
3



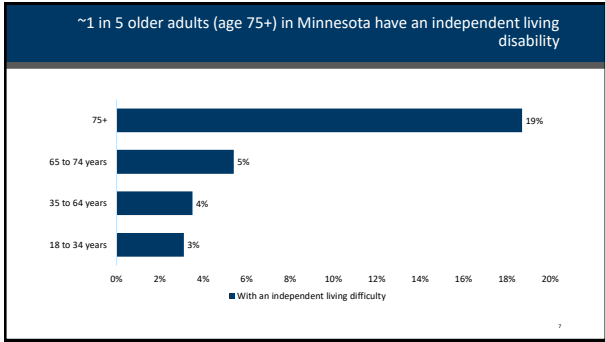
4



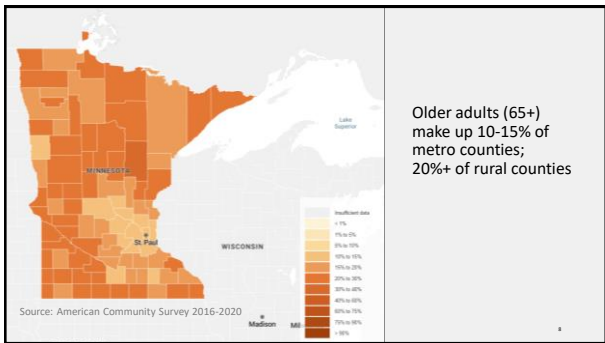
5



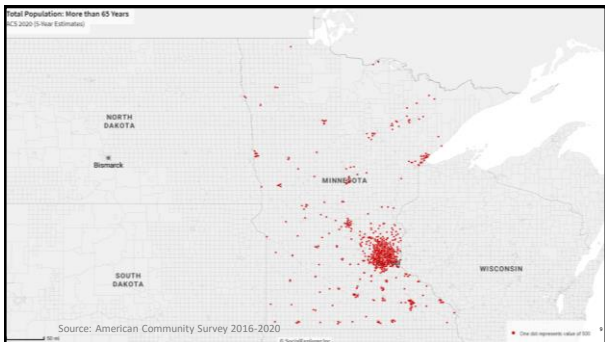
6



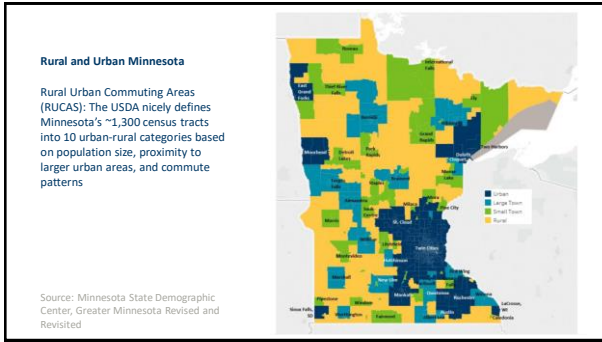
7



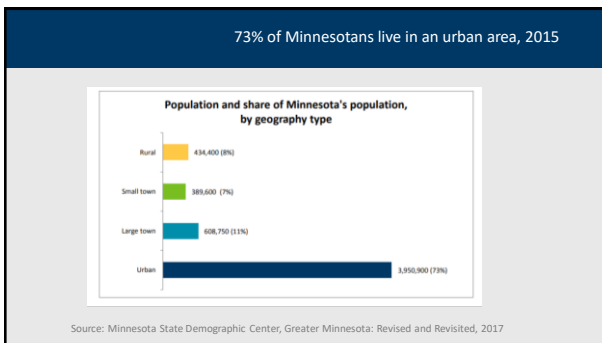
8



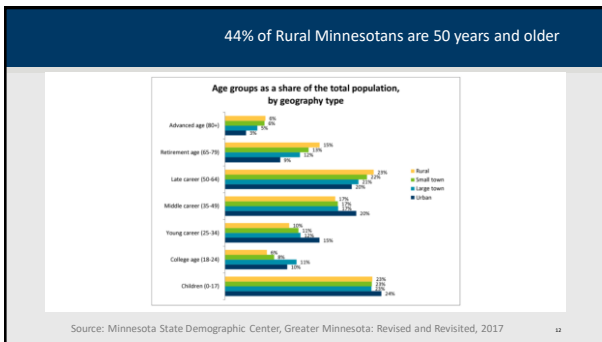
9



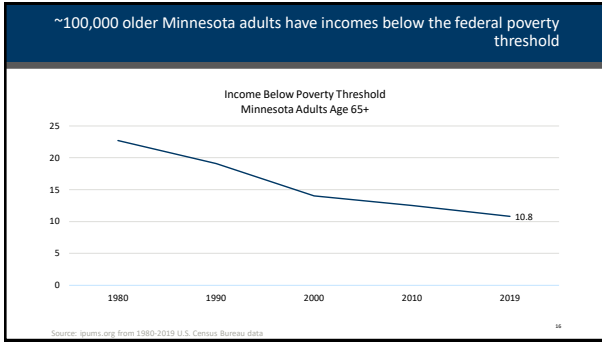
10



11



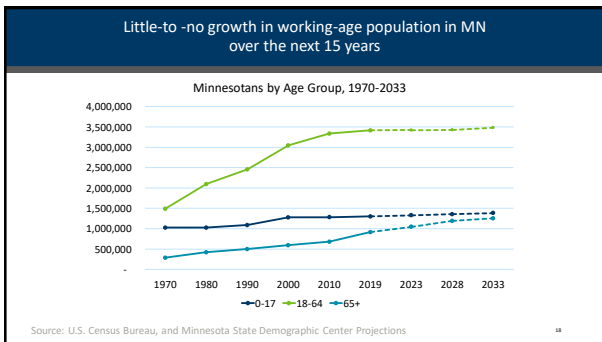
12



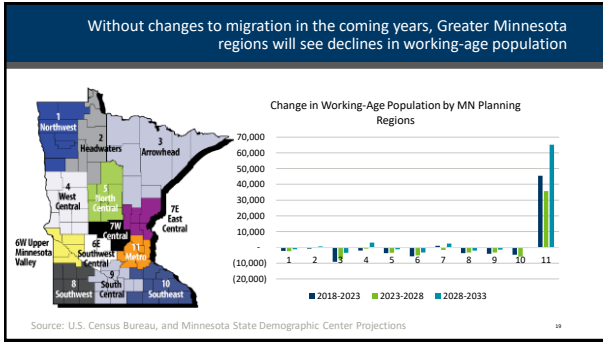
16



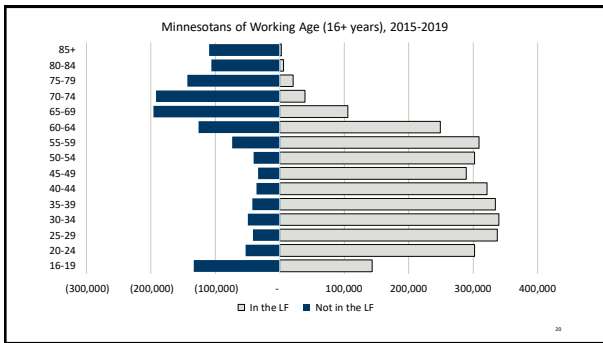
17



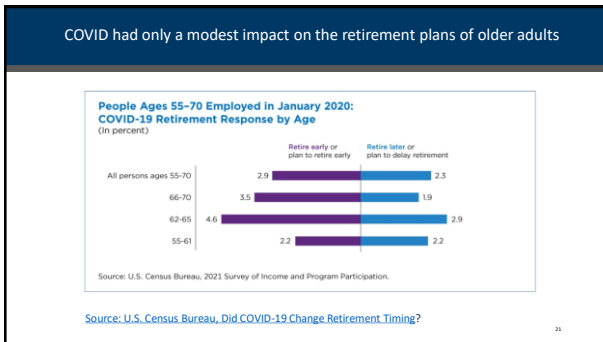
18



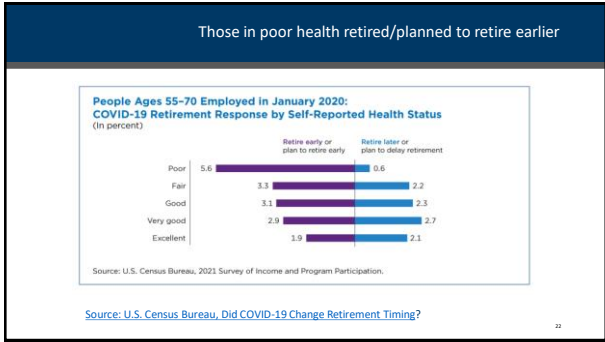
19



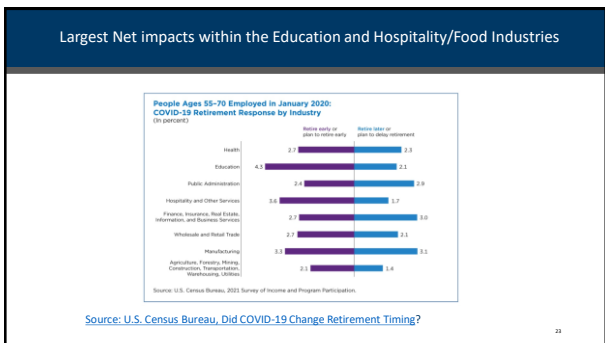
20



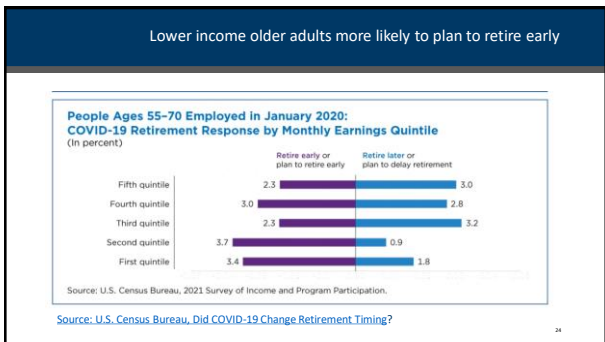
21



22



23



24

Labor Force Recap

- Little-to-no labor force growth projected in the next 10-15 years. Some areas within Minnesota will see their labor force decline.
- Migration left as a potential source of growth. Patterns will depend on:
 - On-going need for workers
 - Pull of Minnesota's economy relative to other economies
 - Federal immigration policies
 - Impact of Climate change

31

31

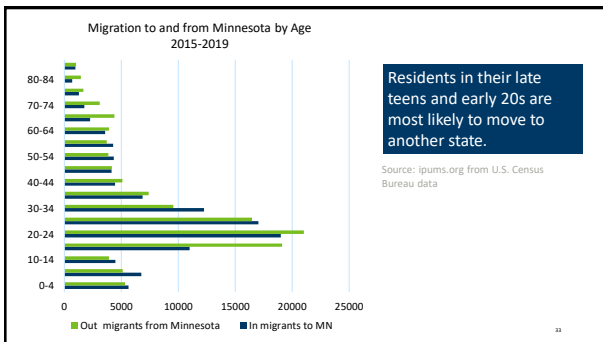
mn MINNESOTA STATE DEMOGRAPHIC CENTER
DEPARTMENT OF ADMINISTRATION

Thank you

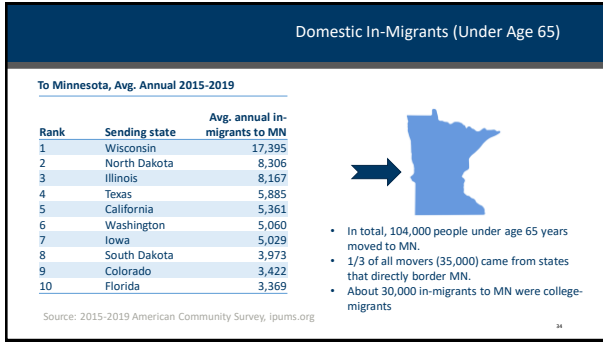
Susan Brower, Minnesota State Demographer
demography.help@state.mn.us

3/19/2023 Minnesota Department of Administration | mn.gov/dema 32

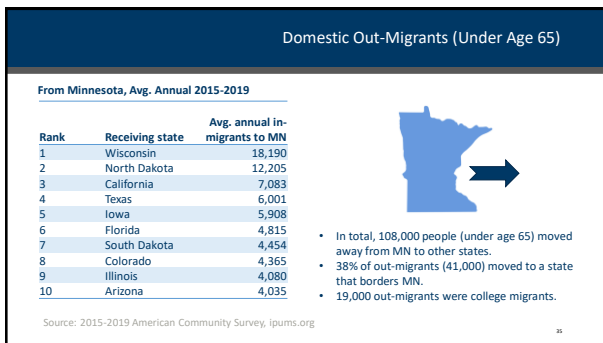
32



33



34



35
